

## 7 Steps

1

Review resources, previous research, and in-progress research



2

Develop specific research question or hypothesis



3

Complete the Manuscript Analysis Request Form (MARF)



4

Submit the completed MARF to the HHS HRSA EMSC Data Center (EDC) for internal review



5

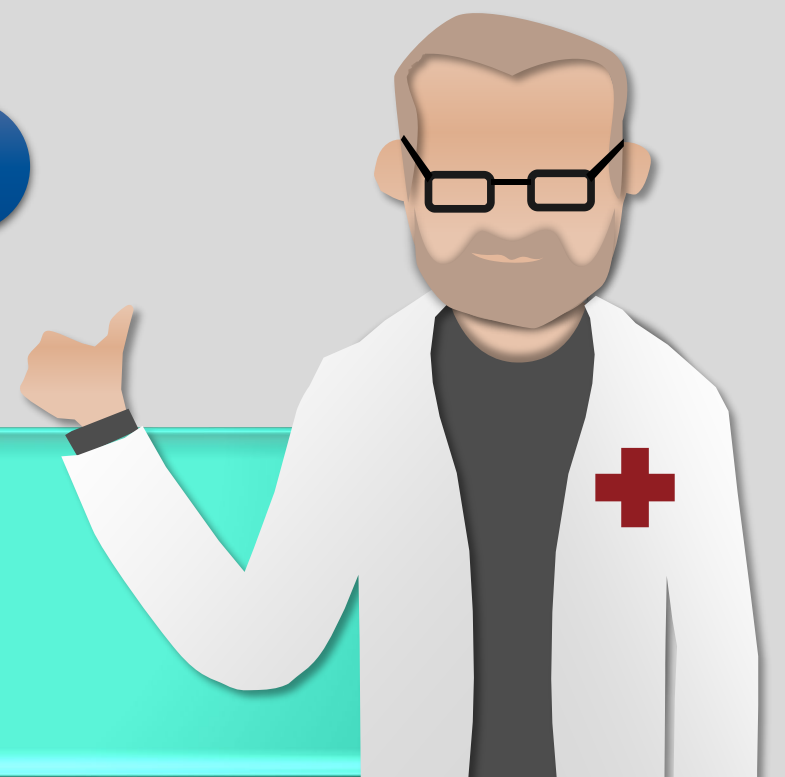
EDC Team reviews Investigator's completed MARF



Investigator can resubmit the MARF if it is sent back from the EDC Team with comments

6

Meet with the EDC Team and EDC Statistician



7

Review and approve the Manuscript Analysis Plan (MAP)

